



*Perinatal Addictions
Prevention Project*

Resource Directory

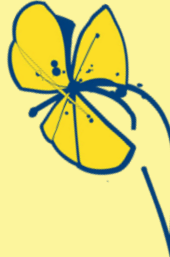


About Our Program

There are babies born in New Jersey who are exposed to drugs and alcohol during pregnancy. The Perinatal Addictions Prevention Project is a statewide effort to:

- Decrease the number of pregnancies affected by substance use
 - Reduce harm associated with perinatal substance use
- Educate the public and professionals about the risks associated with substance use during pregnancy

We partner with healthcare providers, drug and alcohol treatment services and state agencies to offer resources to prevent and address substance use in pregnancy. We provide you with the necessary tools to build a healthy future for your patients and our communities.



SUBSTANCE USE SERVICE PROVIDERS *Alphabetical by County*

Provider	Inpatient	Outpatient	(M)Methadone (S) Subutex (V) Vivitrol	Co-Occuring	Location	Phone	Payer Source
ATLANTIC							
Addiction Recovery System		X	M/S	X	Mays Landing	(609) 601-8611	Private pay, Subsidized
AtlantiCare		X		X	Atlantic City Egg Harbor Twp Hammonton	(609) 646-9159	Medicaid, Medicare, Private pay, Subsidized
AtlantiCare - STEPS Program		X	S	X	Atlantic City Egg Harbor Twp	(609) 441-8976 (609) 383-8668	Medicaid, Private Pay, Subsidized
Helping Hands - Maryville		X		X	Northfield	(855) 823-3428	Medicaid, Private Pay, Subsidized
John Brooks Recovery	X	X	M/S	X	Atlantic City Pleasantville	(609) 345-2433 (609) 345-4035	Medicaid, Private Pay, Grant Subsidized
BURLINGTON							
Burlington Comprehensive Counseling Inc.			M/S		Mount Holly	(609) 267-3610	Medicaid, Subsidized
Delaware House (<i>Mental Health</i>)		X		X	Westampton	(609) 267-9339	Medicaid, Subsidized
Oaks Integrated Care		X		X	Mount Holly	(800) 963-3377	Medicaid, Medicare, Private Pay, Subsidized

SUBSTANCE USE SERVICE PROVIDERS *Alphabetical by County (continued)*

Provider	Inpatient	Outpatient	(M)Methadone (S) Subutex	Co-Occuring	Location	Phone	Payer Source
CAMDEN							
Bravo Medical		X	M/S		Somerdale	(856) 679-2500	Medicaid, Private Pay
Camden Treatment		X	M/S		Camden	(856) 338-1811	Medicaid, Private Pay, Subsidized, SAI
Center for Family Services		X		X	Voorhees	(877) 922-2377	Medicaid, Subsidized
Center for Family Services (Family First Program)		X		X	Camden	(877) 922-2377	DCPP, Medicaid, Work First
Cooper Center for Healing - Substance Use Treatment		X	S		Camden	(856) 342-2439	Accept all insurance including Medicaid
Delaware Valley Medical		X	M/S		Pennsauken	(856) 665-5100	Private pay, Subsidized
Genesis Counseling Center		X		X	Collingswood	(856) 858-9314	Private pay, Subsidized
Hispanic Family Center		X		X	Camden	(856) 541-6985	Medicaid, Subsidized
Jefferson Behavioral Health		X		X	Cherry Hill	(800) 528-3425	Private Pay, Subsidized
Living Proof Recovery Center		X		X	Voorhees	(856) 216-7134	Free support for those in recovery
Message of Hope		X		X	Voorhees	(856) 435-1023	Medicaid
MICA Club		X		X	Cherry Hill	(856) 662-0955	Medicaid, Private Pay
Princeton House		X		X	Cherry Hill	(888) 437-1610	Medicaid, Private Pay

SUBSTANCE USE SERVICE PROVIDERS *Alphabetical by County (continued)*

Provider	Inpatient	Outpatient	(M)Methadone (S) Subutex	Co-Occuring	Location	Phone	Payer Source
CAMDEN (continued)							
Rowan School of Medicine- Neuro Musculoskeletal Institute		X	S		Stratford	(856)566-7010	Medicaid, Commercial, Private Pay
Starting Point		X			Westmont	(856) 854-3155	Some Medicaid, Some Private Pay, (no HMOs)
Oaks Integrated Care		X			Cherry Hill	(800) 963-3377	Medicaid, Medicare, Private Pay, Subsidized
Unity Place		X		X	Cherry Hill	(856) 424-4142	Medicaid
Village Wrap		X			Camden	(856) 240-1417	Medicaid, SAI, Sliding Scale
Virtua Health		X	S	X	Berlin	(856) 322-3110	Medicaid, Private Pay
Women of Hope		X		X	Berlin	(856) 767-3700	Medicaid
CAPE MAY							
Acenda Integrated Health		X		X	Cape May Court House	(844) 422-3632	Medicaid, Private pay, Subsidized
Addiction Recovery System		X	M/S	X	Cape May Court House	(609) 463-0500	Medicaid, Private pay, Subsidized
Cape Assist		X			Wildwood	(609) 522-5960	Medicaid, Private pay, Subsidized
Complete Care Fresh Start		X	S		Cape May Court House	609-465-0258	Medicaid, Private Pay, Subsidized, Sliding Scale
CUMBERLAND							
Complete Care Fresh Start		X	S	X	Millville, Vineland	(856) 451-4700	Medicaid, Private pay, Subsidized, Sliding Scale
Cura, Inc		X			Vineland	(856) 696-7335	Medicaid, Private Pay, DYFS, Specialized (Spanish)
Guidance Center		X		X	Millville	(856) 825-6810	Medicaid
Inspira Wellness and Recovery Program		X		X	Bridgeton	(856) 668-5500	Medicaid
Maryville		X		X	Vineland	(856) 690-1000	Medicaid, Private pay, Subsidized
Vineland Treatment Services		X	M/S		Vineland	(844) 768-1193	Medicaid, Private Pay

SUBSTANCE USE SERVICE PROVIDERS *Alphabetical by County (continued)*

Provider	Inpatient	Outpatient	M)Methadone (S) Subutex	Co-Occuring	Location	Phone	Payer Source
GLOUCESTER							
Acenda Integrated Health		X		X	Woodbury	(844) 422-3632	Medicaid
Addiction Recovery Systems ARS of Turnersville		X	M/S		Turnersville	(856) 352-5999	Medicaid, Private Pay, Subsidized
Center for Family Services		X		X	Glassboro	(877) 922-2377	Medicaid, Subsidized
Center for Family Services		X		X	Williamstown	(877) 922-2377	D CPP, Medicaid, Work First
Helping Hands Behavioral Health		X	S	X	Clayton	(856) 881-9000	Medicaid, Private Pay
Inspira Wellness & Recovery Program		X		X	Woodbury	(856) 686-5500	Medicaid, Private Pay, Subsidized
Maryville		X		X	Turnersville	(855) 823-3428	Medicaid, Private Pay, Subsidized, SSI
My Friend's House		X	S	X	Woodbury, Berlin	(855) 669-6900 877-215-1880	Medicaid, Gloucester County Funding
Wellness & Recovery Program		X		X	Woodbury	(856) 868-5500	Medicaid, Subsidized
ESSEX							
Project First	<i>HIV+ only</i>				Newark	(973) 371-9800	Subsidized, Private pay
Turning Point	X				Verona	(973) 380-0905	Subsidized, Private pay

SUBSTANCE USE SERVICE PROVIDERS *Alphabetical by County (continued)*

Provider	Inpatient	Outpatient	M/Methadone (S) Subutex	Co-Occuring	Location	Phone	Payer Source
HUNTERDON							
Good News Home for Women (Women Only)	X				Flemington	(908) 806-4220	Subsidized, Private Pay, Medicaid
MONMOUTH							
Epiphany House (Woman and Children, 0 -12 years)	X				Asbury Park	(732) 775-0720	Private Pay, Subsidized
New Hope Foundation	X				Marlboro	(800) 705-4673	Medicaid, Private Pay, Subsidized
PASSAIC							
Eva's Village (Women and Children)	X		M/S	X	Patterson	(973) 523-6220	Subsidized, Medicaid
SOMERSET							
Carrier Foundation	X				Belle Meade	(800) 933-3579	Subsidized, Private Pay
Center for Great Expectations	X		M/S		Somerset	(732) 247-7003	Subsidized, Private Pay
UNION							
Trinitas Hospital's Project Sustain (Woman and Children, 0-12 years)	X	X		X	Elizabeth	(908) 355-1500	Subsidized, Private Pay
STATEWIDE							
New Jersey Addictions Services Hotline 1(844)276-2777				Reach NJ-New Jersey Addiction Help Line 1(844) 732-2465			
CHESTER, PENNSYLVANIA							
Bowling Green Brandywine	X				Kennett Square	(844) 797-7118	Private Pay, Medicaid
NEW CASTLE, DELAWARE							
Kirkwood Detox	X				Wilmington	(302) 691-0140	Subsidized (Salem County Residents only.) Private Pay

MCH EARLY CHILDHOOD CONNECTIONS CENTRAL INTAKE SITES *Alphabetical by County*

Atlantic	Southern NJ Perinatal Consortium	(800) 611-8326	Hudson	Partnership for MCH of Northern NJ	(201) 876-8900 ext 221
Bergen	Partnership for MCH of Northern NJ	(973) 942-3630 ext 11	Hunterdon	Central Jersey Family Health Consortium	(888) 551-6217
Burlington	Southern NJ Perinatal Consortium	(800) 611-8326	Morris	Partnership for MCH of Northern NJ	(973) 343-2650
Camden	Southern NJ Perinatal Consortium	(800) 611-8326	Mercer	Central Jersey Family Health Consortium	(888) 551-6217
Cape May	Southern NJ Perinatal Consortium	(800) 611-8326	Middlesex & Somerset	Central Jersey Family Health Consortium	(888) 551-6217
Cumberland	Acenda Integrated Healthcare	(856) 431-4180	Monmouth & Ocean	Children's Home Society	(877) 352-7843
Essex	Essex Pregnancy & Parenting Connection	(973) 621-9157 ext 141	Passaic	Partnership for MCH of Northern NJ	(973) 942-3600 ext 14
Gloucester	Acenda Integrated Healthcare	(856) 431-4180	Salem	Acenda Integrated Healthcare	(856) 431-4180

CONFIDENTIAL CALL LINE NJ Connect—Free, confidential peer support for opiate use (855) 652-3737

DOMESTIC VIOLENCE SUPPORT SERVICES *Alphabetical by County*

Provider	Emergency Shelter	Address	Contact Info
ATLANTIC			
AVANZAR	X	1201 New Road, Suite 240, Linwood, NJ 08221	24 Hour Toll Free Hotline: 1 (800) 286-4184 Phone: (609) 646-6767 TTY: 1-800-787-3224 Fax: (609) 601-2975 TEXT: (609) 569-5437 www.avonzarnow.org
BURLINGTON			
Providence House Burlington County	X	PO Box 496, Willingboro, NJ 08046	24 Hour Toll Free Hotline: 1 (877) 871-7551 Phone: (609) 871-7551 TTY: (877) 871-7551 Fax Office: (856) 824-9340 Fax Shelter: (609) 871-0360 www.catholiccharitiestrenton.org
Providence House Burlington County <i>Counseling Center</i>		950 Chester Ave., Delran, NJ 08075	Phone: (856) 824-0599 Fax: (856) 824-9340 www.catholiccharitiestrenton.org
CAMDEN			
Camden County Women's Center	X	PO Box 1459, Blackwood, NJ 08021	24 Hour Hotline: (856) 227-1234 TTY: (856) 227-9264 Office Phone: (609) 871-7551 Fax: (856) 227-1261
Camden County Women's Center Outreach Center		PO Box 1459, Blackwood, NJ 08021 Attn: Outreach	Phone: (856) 963-5668
CAPE MAY			
CARA, Inc. <i>(Coalition Against Rape & Abuse, Inc.)</i>	X	PO Box 774, Cape May Court House, NJ 08210	24 Hour Hotline: (609) 522-6489 Toll Free: 1 (877) 294-CARA [2272] TTY: (609) 463-0818 Office: (609) 522-6489 Fax: (609) 463-0967 Email: carasafe1@cara-inc.net www.cara-cmc.org
CUMBERLAND			
Center for Family Services		3638 E. Landis Ave., Vineland, NJ 08361	24 Hour Toll Free Hotline: 1 (800) 225-0196 Office: (856) 696-2032 Fax: (856) 696-7336 www.centerffs.org

DOMESTIC VIOLENCE SUPPORT SERVICES *Alphabetical by County (continued)*

Provider	Emergency Shelter	Address	Contact Info
GLOUCESTER			
Center for Family Services <i>Services Empowering the Rights of Victims (SERV)</i>	X	PO Box 566, Glassboro, NJ 08028	24 Hour Hotline: (856) 881-3335 Toll Free: 1(866) 295-7378 TTY: (856) 881-9323 Fax: (856) 881-4042 Email: serv@centerffs.org www.centerffs.org
SALEM			
Salem County Women's Services	X	PO Box 125, Salem, NJ 08079-0125	24 Hour Hotline: (856) 935-6655 TTY: (856) 935-7118 Office Phone: (856) 935-8012 Fax: (856) 935-6165

QUIT SMOKING SERVICES *Alphabetical by County*

Provider	Address	Contact Info
STATEWIDE		
NJ Quitline	New Jersey Department of Health	1-866-657-8677
Mom's Quit Connection For Families	Southern New Jersey Perinatal Cooperative 2500 McClellan Ave., Suite 250 Pennsauken, NJ 08109	24 Hour Toll Free Hotline: 1 (800) 545-5191 Office: (856) 665-6000 Fax: (856) 665-7711 Email: mqc@snjpc.org
ATLANTIC		
Tobacco Dependence Treatment Program	Shore Memorial Hospital Quit Center One East New York Ave., Somers Point, NJ 08244	Phone: (609) 653-3440 Email: quitcenter@shorememorial.org <i>www.shorememorial.org</i>
BURLINGTON		
Virtua's Lung Wellness Center	Virtua Health 141 Route 70 East Marlton, NJ 08053	Toll Free: 1 (888) VIRTUA-3 [1-888-847-8823] Office: (856) 355-7176 <i>www.virtua.org</i>

SUPPORTIVE HOUSING

Provider	Service Area	Contact Info
Cooper Addiction Medicine Program	Any New Jersey County	Phone: (856) 342-2439
A Place to Call Home	Any New Jersey County	Phone: (844) 422-3632

RECOVERY SUPPORT

Provider	Service Area	Contact Info
Project Embrace/ Maternal Wraparound	Atlantic, Burlington, Camden, Cape May, Cumberland, Gloucester, Salem Counties	Phone: (856) 675-5310

Building Bridges

The Perinatal Addictions Prevention Project partners with healthcare providers, drug and alcohol treatment services and state agencies like the New Jersey Department of Children and Families. We can offer you the opportunity to build a healthy future for your patients, your school and your community.

Perinatal Addictions Prevention Project



856-665-6000 papp2@snjpc.org

2500 McClellan Avenue, Suite 250
Pennsauken, New Jersey 08109



Southern New Jersey
**PERINATAL
COOPERATIVE**

The Perinatal Addictions Prevention Project is a statewide substance abuse screening, prevention and education initiative funded by the New Jersey Department of Health. In the South Jersey region, the program is administered by the Southern New Jersey Perinatal Cooperative. snjpc.org ©2023



Additional Resource Directories



<https://www.partnershipmch.org/assets/2013/10/PAPP-Directory-2022-1.pdf>



https://cjhfc.org.presencehost.net/file_download/396d9f22-aff9-4332-a982-f16f3693fac2